

**WELCOME
TO OUR
SUSTAINABILITY
DETECTIVE
TRAINING**



**CONGRATS
ON
BECOMING
A
SUSTAINABILITY
DETECTIVE**



Chargy, Holy, and Ray as well as the Dreamcahtcher are trademarks of ChargeHorizons GmbH

This work © 2023 by ChargeHorizons GmbH is licensed under CC BY-NC-SA 4.0. To view a copy of this license, visit <https://creativecommons.org/licenses/by-nc-sa/4.0/>





Hello Aspiring Detective!

Get ready to embark on your adventure into the world of green travel! This guide is your secret map to mastering the art of sustainable exploring. As we dive into this adventure, remember, you're more than a traveler, your on a mission to uncover the secrets of sustainable hospitality.

Should you at any moment stumble upon any eco-mysteries, fear not! Your trusty instructor (guardian) is there to help you continue your journey.

Best of Luck,
Chargy, Holy, and Ray



ChargeHolidays is a stewardly owned purpose start-up shaping the global travel of tomorrow in a sustainable, friendly way. You can download our trip booking app for free, get transparent insights into sustainable behavior of accommodations, and read articles from natives about their culture.

Layout: Jeroen Trzaska, Vivian Trzaska
Content: Lilith Diringer, Jeroen Trzaska
Mascots: Vivian Trzaska

Created with the help of:

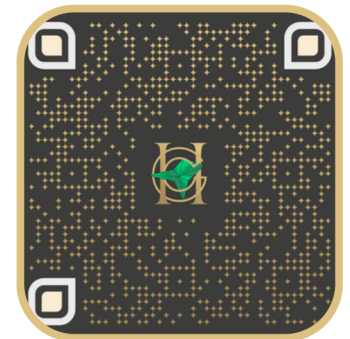


If you enjoyed this booklet and want to support our work, or have feedback, feel free to get in touch here:

more information:



donate:



chargeholidays.com

Hey Guys, there you are! Have you already met our new friends? Let's welcome them!



Hey Chargy! Hey everyone! So nice to be back on the road



I'm so excited for our adventure! But first: tell us about yourself!



Your portrait

Name

Age

Hobbies

Awesome to meet you! Hey-Ray I'm so excited to take them along on our trip.



You just want to share all your drawings with them, don't you Holli?



Well of course! Art is one of the most important parts of culture!



No way, going out and meeting locals is the only way to go!



Guys, stop arguing! Both are important - but food is the most fun to explore!



Let's just ask our new friend. What do you prefer?



Exploring art ● Trying new food ● Making new friends

We finally made it to the hotel - sadly we can't check in yet.



No problem - let's take a look at our journey so far! We've already impacted the environment by coming here. Can you help calculate this impact based on our mode of transportation?



The distance from your home to our destination is...

miles

Assess your environmental impact from transportation. Take a moment to calculate the amount of CO2 for our round trip.

Mark your mode of transportation:



0.52



0.24



0.12



0.26



0.5

lbs co2/mile

How much carbon have you already emitted?

lbs CO2e

How much carbon emissions did you avoid by not flying?

lbs CO2e

Let's brainstorm how the accommodation can boost eco-friendly travel. How about e-charging stations or being just a hop away from the nearest bus stop? Maybe they also rent bikes to get around?



Note down what the accommodation does to support sustainable transportation:



Hey there, Chargie! What does CO2e stand for?

CO2e means Carbon Dioxide equivalent. Carbon Dioxide is a gas that's found hanging out in the air we exhale.



Alright, tell me, what does that "e" stand for?



Do you think you've got what it takes to tackle Hollie's question? Help Chargie to answer.

Three horizontal yellow lines for writing an answer.

Remember next time we hear "CO2 equivalent," it's a puzzle piece that teaches us about our impact on the planet. So, let's reduce it and keep our world a cool place to be!



Hey Chargie! What's your go-to activity once you set foot in a new place?



I'm a foodie through and through! With all the travel woes, my tummy's always rumbling for a good bite.



Let's head to the restaurant! Hopefully, they have some delicious options available.



Before sitting down at a table, let's take a look around with our detective glasses.

What catches your attention in this restaurant?

Check out this list and give a ✓ to measures taken and a ✗ to what needs work.

And hey, if you spot something else, **add** it in!

- water/drink refill station
- food waste measurement
- waste separation
- multi-use cutlery
- no plastic packaging
- measure food waste
- glass bins to show food waste

Seven horizontal yellow lines for marking the list items.



I'm feeling quite hungry. How about we look at the menu together and decide what we'd like to order?

Me too! Let's take a look...



Look at the menus below. What dish would you like? What is the difference between the menus?



What do you think about the pumpkin soup? It sounds delicious.

Yeahh! And it reminds me of Halloween.



I don't know...are pumpkins ripe for picking at that time of the year? Frankly, I'm clueless about which veggies are in season.

Hold up, what's the big deal here? Why is that so important?



Shipping and storing food out of season is a carbon nightmare. So, let's zoom in on tomatoes and see how their sustainable impact changes throughout the year.



Connect the dots between the conditions and CO2e

- | | |
|----------------|-----------------------------------|
| 0.80 lb CO2e ● | ● canned tomatoes |
| 3 lb CO2e ● | ● supermarket tomatoes |
| 20 lb CO2e ● | ● local greenhouse tomatoes |
| 110 lb CO2e ● | ● organic local outdoors tomatoes |

Aha, I see! Now let's check out what's in season. I'm starving.



Check in with a staff member and write down five fresh ingredients that are in season:



It's great that we've learned about seasonality!

Guess what: a product's eco-friendliness is influenced by soooo many more factors, ranging from water usage during production to transportation and packaging.



Oh hey, did you notice in the menu that they listed the CO2 equivalent for each dish? Let's pick something that won't be too rough on our planet.



I think that is also the most delicious one – yum!



What do you eat today? If the hotel doesn't show its CO2 emissions per dish, ask the waiter or use the qr-code to find recipes

Breakfast:	<input type="text"/>	<input type="text"/>
Lunch:	<input type="text"/>	<input type="text"/>
Dinner:	<input type="text"/>	<input type="text"/>
Sum:	<input type="text"/>	



Look if you can find a similar sign in the restaurant you are at:

"We put a lot of effort into preparing our delicious food. Please honor our effort as well as the work of the farmers, and do not waste any edible food."

Ask the waiter how much food waste they produce

• **every day:**

• **every week:**

Did you know?

- More than one-third of all the food produced ends up in a bin.
- 780 mil. people are suffering from hunger.
- 8 children die every day because they do not have sufficient food.



That tasted amazing! Do you have any handy tips for our next food adventure?

Definitely! We should avoid overloading our plates!



And bring a reusable container with us - so if we have leftovers, we can take them and share them with all our friends.

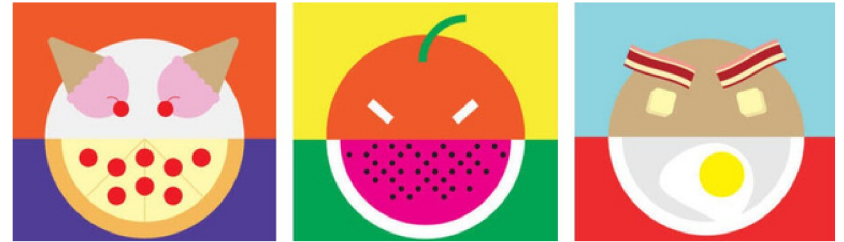



What about you? Can you think about any food you had to toss away? Did you come up with any creative ideas on how to avoid food waste?




name	wasted food	reason	strategy
Holli	1/2 apple	not hungry any more	take a box

Create your very own **Waste Warrior** to keep your strategies in check! Let the leftover scraps from your latest adventure inspire your warrior masterpiece. Need some ideas? Check out these examples to get your creative juices flowing:





My stomach is about to burst! Should we freshen up with a quick shower before we start the evening?



Brilliant plan! First there get's the shower! Ready? GO!

Let's play detective - Can you spot unsustainable practices? Circle them.



Match the clues (on the next page) with the image and write the letters in the circles you have drawn on the picture. Don't forget to color the eco-friendly ones at your stay in green and the unsustainable ones in red. If you don't have the information you need to decide, circle them in orange.

- a) 72% of sun care products contain microplastic
- b) Children often have to work in a wide range of tasks in the cotton industry
- c) Chemicals in your shampoo can harm the ecosystem, leading to animal distinction
- d) Only 9% of worldwide plastic gets recycled. 12.7 million tonnes of plastic are dumped into the oceans every year
- e) Detergents used to clean towels and bedsheets often include microplastics and can contaminate waterways
- f) Using local material for furniture can save a lot of CO₂e
- g) Using recycled toilet paper decreases the need to cut down trees and reduces water and energy consumption during manufacturing.

Prepare yourself for a meeting with the staff. Start your conversation by expressing your thanks for the sustainable measures already taken. Ask questions about the items you circled in orange. Then suggest your ideas on improving the aspects you marked in red.

**Can you share what the staff member said?
Did you learn any new information?**



I got an awesome idea! Let's try to reduce our water usage by learning new ways to conserve!

Cool idea! And look: This shower can tell how much water you use!

Really? That's awesome! It has always been a mystery to me - how much water I actually use for a single shower.



Did you know?

Hotels use up to ten times more water than an average household! On the island Bali for instance, they need 528 gallons water/guest/day.

How much does your hotel need?

Calculate how many days you could drink from one day's guest water usage.

(you need to drink 0.75 gallons/day)

In Bali:

In your hotel:

*Challenge Time! Who can use the least water? **Get your family together and set the rules for your measurement. Remember to reward the winner at the end. What about a delicious local treat?***



name	amount of water or seconds under shower



Measuring water consumption is fun. However, are there other ways that hotels can cut down on their water usage?

Three horizontal yellow bars for writing answers.



Great Ideas! I think I have a cool Memory card set in my bag - Let me grab it. It will give us even more ideas.

Amazing! Let's play a fun game!



Cut out the squares and challenge your memory by matching the picture with the corresponding description.



I bet my favorite teacher at home loves to know what I am experiencing here. Who do you want to tell about your adventures? Write a postcard!

Why settle for a plain old postcard when you can send one that screams adventure? Imagine sharing all those exhilarating moments, meeting new faces, and new knowledge you have learned!

But hey, here's a tip: Don't bore your loved ones with just the weather report. Check out our "inspiration" map for some fresh ideas to jazz up your postcard!





Hey, I just thought of a fun game! Wanna tag along?



I'm curious, what his groundbreaking idea is.

Shut your eyes, and wear these headphones.



Hey! What are you doing?



Join us exploring what it's like to move in this place with a disability!

Make sure someone supervises you for safety. Start by blindfolding yourself with a scarf and navigating the hotel. After a while, switch to noise-cancelling headphones.

What did you notice when you were blindfolded or your hearing is impaired?

Blank yellow box for response.

Was there something in the hotel that helped you orient yourself?

Blank yellow box for response.

Do you have any idea what the hotel could improve?

Blank yellow box for response.

Did you know that **one in six people** live with a disability, yet our world is not always on their side! But, hey, here's something we can do to make things easier: hotels should keep everyone's needs in mind and accommodate to every individual. Above that, ramps, braille, audio, and video recordings do not only help people with disabilities but also guests with strollers, heavy bags and many more.

As a fellow traveler, let's make sure we're always ready to lend a helping hand.

Before you talk to a staff member about improving the experience for people with disabilities, let's see what's happening behind the scenes. These people help you day and night, so it's crucial to ensure they have a safe and supportive workplace.

Anna works in a chain Hotel in NYC, lately her manager has requested her to stay late more often. When asking her manager for a day off, he gave her even more shifts.

Now she has a schedule barely allowing her to rest properly before her next shifts and is not compensated for her work according to legal requirements.

Jimmy works in a small family hostel, he just came back from his well deserved paid time off, now he feels well rested and offers to take on a few of his co-workers shifts as he got sick, the manager agrees and offers him a way to compensate his efforts. He also suggests that Jimmy goes on a week-long workshop in the neighboring country which will teach him leadership skills - a topic he has shown interest in for a long time.

Where would you prefer to work and why?

Look at the following aspects that are important for employees in the hospitality sector and underline where you read about these topics in the text.

- **Feedback system: employees can voice their opinion**
- **Living wage: everybody can afford a decent life**
- **Equal pay: no discrimination based on race, religion, or gender**
- **No child labor**

Approach one of the staff members with the questions you have about social responsibility. *Always be nice and they will be happy to discuss with you.*

What did you learn? Is there a way you can contribute to the well-being of the employees?

I really like that the hotel takes some measure to be ecologic and social!



Definitely! Did you see the schedule of the fun-activities? It said that there will be a karaoke night.

That sounds amazing. Let's go and check out the community room!



Lend us a hand in spotting the eco-friendly features of this hotel's epic community space.



**Do you find the ones that are unsustainable?
Mark them in red. Mark the others in green.**

c p e f r e n e w a b l e i w a l
w a s s e s b b a a b h k x a e z
d e s t r o y j s e a c h d d a l
o p e f b l r n t r e c y c l e b
g p f n e r c a e i o u s h s j b
i n n o v a t i o n p e r o n g i

Look at the measures with your markings. **Note** down what you think the hotel could improve:

Two horizontal yellow bars for taking notes.

**How would you design your own sustainable friendly community room?
Draw a sketch:**

A large yellow-bordered square box for drawing a sketch.



I had so much fun at the karaoke night! It is sooo sad that we already have to leave again.

Yes. But: I will keep all those great memories, and we took a lot of pictures!



I think we have to pack our suitcases again. Crazy how time flies.

Look. It is even still half full. I didn't realize that we brought so much and used so little.



You're right. We should pack more carefully next time.



No matter your transportation, packing light is always the better option. Who likes to carry heavy when you choose to walk or bike? Even when traveling by car or plane it saves a lot of CO2 emissions when only taking what you need. A lighter plane will need less kerosene to lift off and a light car will bring you to your destination with fewer emissions. Make clear investigations now to be better prepared next time.

Do this task at the end of your stay!

I used

I didn't use

Number of items::



Which items could you have shared with your friends instead of bringing one each?



Which items did you use often and don't want to forget next time?



Which items did you get new and want to bring back home?

In your trip bag, you may not only have items you already brought but also want to pack additional souvenirs. Be careful when buying new things. Especially to protect animals. Here is why:

Look at this info-sign

WARNING

- Killing endangered animals is illegal
- 30 % of all animal species are endangered
- Illegal trading with animal products generates ~\$ 22 mil. of income/year.
- Tourists buy 90 % of illegal animal products

Look at those endangered items and consider alternatives you could take home instead. Note them down and draw pictures of your favorite sustainable souvenirs.

Jewelry made from teeth, claws, and horns, furs and skins

Sea turtle Ukulele

Carvings of bones and teeth of whales

Medicine from tiger bones

Pangolin scales

Rhino horns

Snake wine

Exotic meet (e.g. crocodile, dolphin)

Item	Alternative	Drawing



We had so much fun during our holidays. Mainly thanks to you.

Thank you so much for all your support!



We hope that you learned a lot what you can share with your friends when returning home

Also, you had some nice talks with people from the hotel.



We also know that we couldn't show you everything and that your accommodation may have different features. Let's get creative!



Think about what you noticed in the hotel. How can the hotel become more sustainable-friendly?

Write it down and go to the hotel staff to share your ideas with them.

Three horizontal yellow lines for writing.

What was the most exciting for you?

Note down your personal contribution to sustainability during your trip:

Three horizontal yellow lines for writing.



Congratulation! You are now officially a sustainable travel detective. Print out your certificate and insert your name! Welcome to our club.



immediate repair of leakages

discounts for waiving daily cleaning service

educating guests about water usage

measuring & reducing water consumption

using rainwater for e.g., toilets, shower

not washing the towels of guests every day


collaborating with the community to avoid water scarcity

filtering & reusing water

providing training for employees



POSTCARD



Certificate of Appreciation

This is presented to

Has shown capabilities to contribute to a sustainable future.
You are now officially a member of the **sustainable traveling detective club!**

